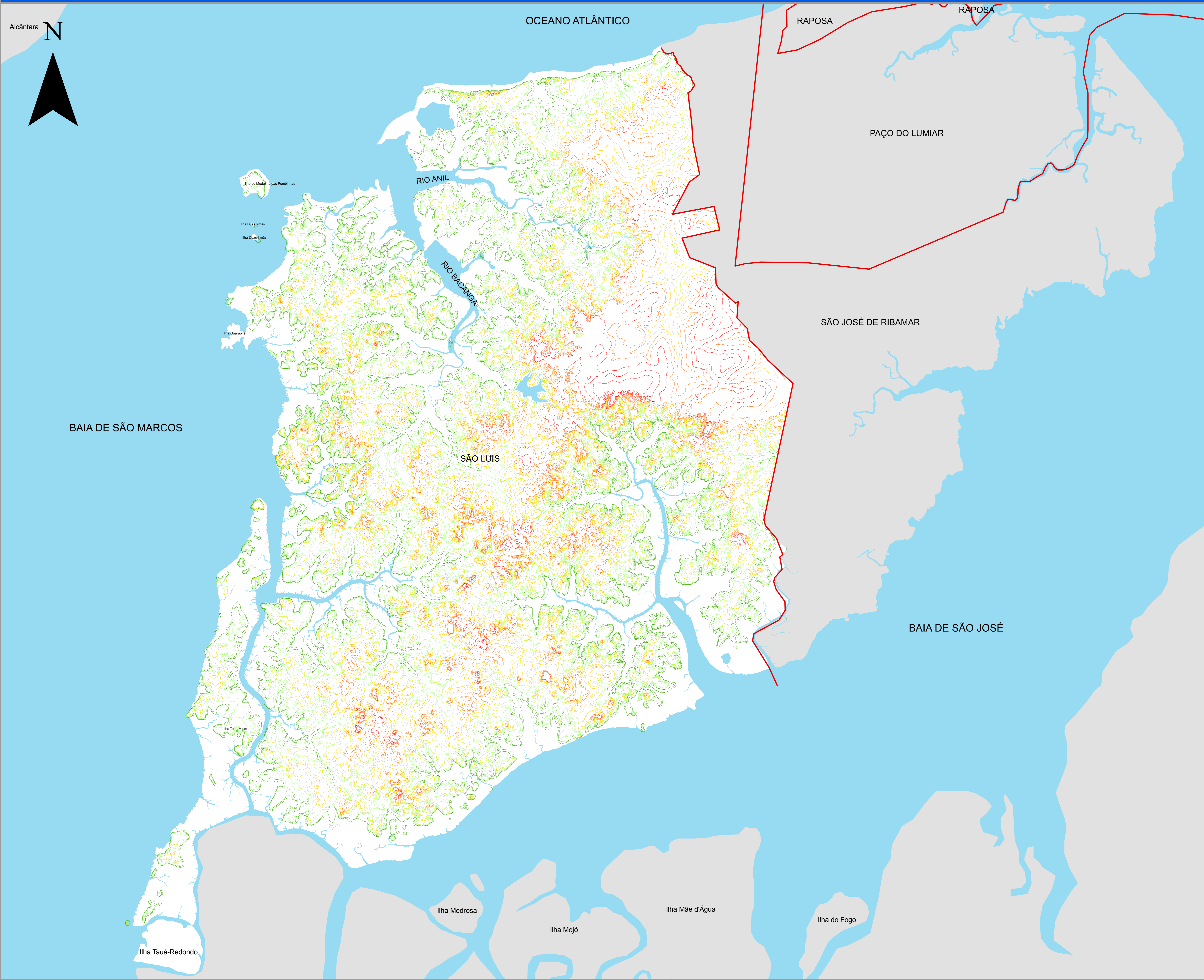
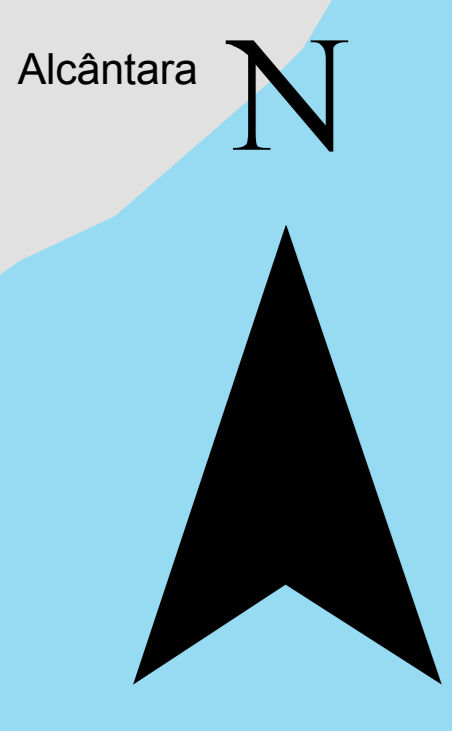


# MAPA DE ALTIMETRIA DE SÃO LUÍS



- LEGENDA**
- LIMITE MUNICIPAL
  - 5,00 - 10,00
  - 10,01 - 20,00
  - 20,01 - 25,00
  - 25,01 - 35,00
  - 35,01 - 45,00
  - 45,01 - 60,00



Fonte: INCID, 2010  
Dados: Curvas Altimétricas das Cartas da DSG (1975)

**ESCALA - 1:50.000**

PROJEÇÃO UNIVERSAL TRANSVERSA  
DE MERCATOR - UTM  
DATUM HORIZONTAL: SAD 69

